

# Route Manager

## fact sheet

Route Manager from Simply Mobile uses the latest mobile technology from Microsoft® to deliver a solution that provides any Inspector, route information at their fingertips and without the need for traditional paper based timetables and forms.

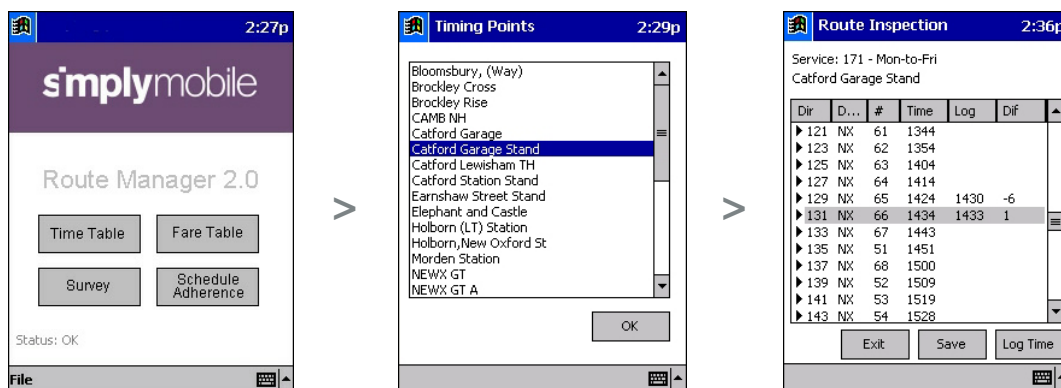
The software operates on the latest Windows platform while using Microsoft's Pocket PC® mobile operating system to bring true mobile benefits and set a new industry benchmark in mobile computing. By dramatically simplifying the user interface it delivers state-of-the-art functionality to help manage the mobile workplace.

## The Central Database

The mobile software has a MS SQL Server database that allows the user to control the latest versions of the timetable data and provide analysis for a variety of data maintained within the system. The database also can provide links to third party scheduling systems, allowing seamless transfer of timetable and schedule data into the Route Manager application.

## Mobile Applications

The Route Manager application suite has been designed in a modular format to allow each company to use only the mobile applications they need. All Route Manager applications have been designed with the familiar windows look and feel to ensure the applications are both intuitive and practical for the user to operate.



Independence House  
Adelaide Street  
Heywood  
OL10 4HF

T 01706 694400

F 01706 694401

E sales@simply-mobile.com

www.simply-mobile.com

Route Manager has a simple front end selection screen built into the Pocket PC<sup>®</sup> in order to allow the Inspector the single click selection he needs to access the program at any time.

## Route Manager Modules

The following Route Manager modules are currently available:

### Pocket Timetable

Once synchronised with the central database, each user will have the latest version of the current operational timetable available on the Pocket PC<sup>®</sup>. As the central database receives an updated timetable the user will also receive this update instantly when they next synchronise their Pocket PC<sup>®</sup>.

The application lets the user select the day of the week, the route, and the boarding and alighting points on the route, prior to searching the timetable for the departure and arrival times between the two selected points.

### Quality Control Survey

Initially the main database application allows the user to define the standard quality checks to be made when inspecting a vehicle in service. This template is then synchronised with the Pocket PC<sup>®</sup> and allows the user to follow an intelligent questionnaire-type format which ensures rapid entry of inspection data where each response automatically leads to the next logical question to ensure rapid completion of the survey.

Once the survey is completed the user can either carry on with further quality surveys or synchronise the Pocket PC<sup>®</sup> with the central database. Upon synchronisation the system immediately sends the data to the analysis reporting database to analyse and report. A copy of the survey document is stored.

### Schedule Adherence

Before leaving the office, each user will be able to identify the particular check points they need to make during their shift, through the central database. Upon completion of this, the Pocket PC<sup>®</sup> will be synchronised with all the required data.

When the user reaches a check point, the mobile application allows the user to identify from a single timing point, the vehicles and routes due to pass through the point and the time of expected arrival. The user can identify timely, late, or early running by the touch of a button. Later, back at the depot this information can again be analysed and trends drawn out of the data to ensure changes can be made to timetables to improve schedule adherence.

### Fare Table Management

Once synchronised with the central database, each user will have the latest version of the current operational fare tables available on the Pocket PC<sup>®</sup>. If the central database receives an updated fare table, the user will receive this update instantly when they next synchronise their Pocket PC<sup>®</sup>.

The application allows the user to select the day of the week, the route, and the boarding and alighting points on the route prior to searching the correct fare to be charged.

### Complaint Handling

This application can allow an inspector to receive and log a customer complaint while on duty without the customer needing to fill out the traditional form. This can then be transferred to a complaints system when the inspector ends his duty.

Independence House  
Adelaide Street  
Heywood  
OL10 4HF

T 01706 694400

F 01706 694401

E sales@simply-mobile.com

www.simply-mobile.com

## Summary

### What It Is

Route managers can now have the information they need at their fingertips without having to carry paper timetables or forms.

### How

An easy to use set of modular programs designed to improve your productivity and reduce the need for paper based repetition. We are able to do this by using the very latest mobile technology combined with a powerful back end database that analyses the results from the following programs:-

- Pocket Timetable
- Quality Control Survey
- Schedule Adherence
- Fare Table Management
- Complaint Handling

### Benefits

- Easy to use
- Improved productivity
- Reduces amount of paper effort required
- Streamline business analysis
- Data more accurate
- Improved communications

### Products and services

- Microsoft® Windows® Powered Pocket PC®
- Microsoft® Windows® 2000 Server
- Microsoft SQL Server 2000
- Microsoft SQL Server CE